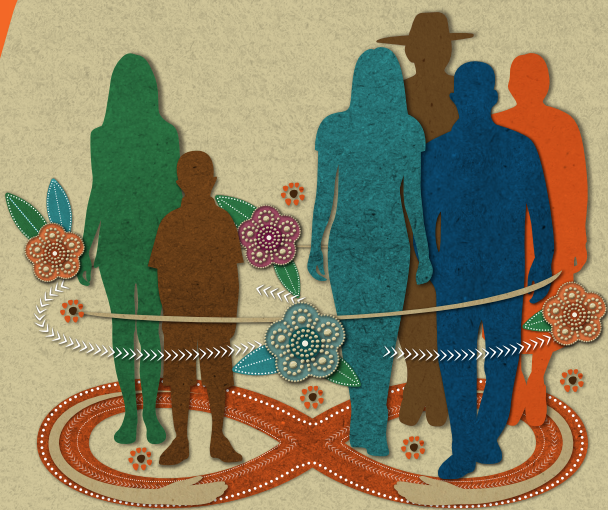


Métis Family Resource Program



Are you Métis and involved with Children and Family Services?

Embrace support and connection with the Métis Family Resource Program!

The Métis Family Resource Program works hand in hand with our Métis community and Children and Family Services to ensure Métis children stay rooted in their distinct cultural identity, rich history, vibrant community, and inherent rights.

Our Métis Family Resource Program can help Métis families with Children and Family Services involvement by:

- ✿ Providing child-centred cultural support and advocacy
- ✿ Developing cultural plans with caregivers to ensure Métis children in care remain connected to their culture
- ✿ Administering cultural sensitivity training to those working with and caring for Métis children
- ✿ Facilitating the Otipemisiwak Métis Government of the Métis Nation within Alberta (MNA) registration process
- ✿ Connecting Métis children and families to MNA programs, services, and community resources

**Otipemisiwak Métis Government
Children and Family Services Department**

780-455-2200
albertametis.com
mfrp@metis.org

Delia Gray Building
11738 Kingsway Avenue NW
Edmonton, AB, T5G 0X5

