



# Métis Nation of Alberta

*A strong Métis Nation embracing Métis rights*

(780) 455-2200 Ext. 249 | 1-800-252-7553 | [www.albertametis.com](http://www.albertametis.com) | [health@metis.org](mailto:health@metis.org)  
11738 Kingsway NW | 100 Delia Gray Building | Edmonton, AB | T5G 0X5

---

Health, Children, and Youth

## MNA Ministry to Offer Temporary Accommodations to Citizens for Medically-Necessary Travel

**June 26, 2018 (Edmonton, AB)** The Ministry of Health, Children, and Youth, at the Métis Nation of Alberta (MNA) provincial head office, is excited to announce the allocation of two (2) suites in the Métis Capital Housing Corporation (MCHC) Renaissance Tower for citizens travelling to Edmonton for medically necessary appointments or treatment.

A one-bedroom suite and a two-bedroom barrier-free suite are available for MNA citizens traveling from communities across the province to access health care services in Edmonton. Citizens applying for this service will have access to safe, reliable, and culturally-appropriate accommodations, free of charge, for medically-necessary travel.

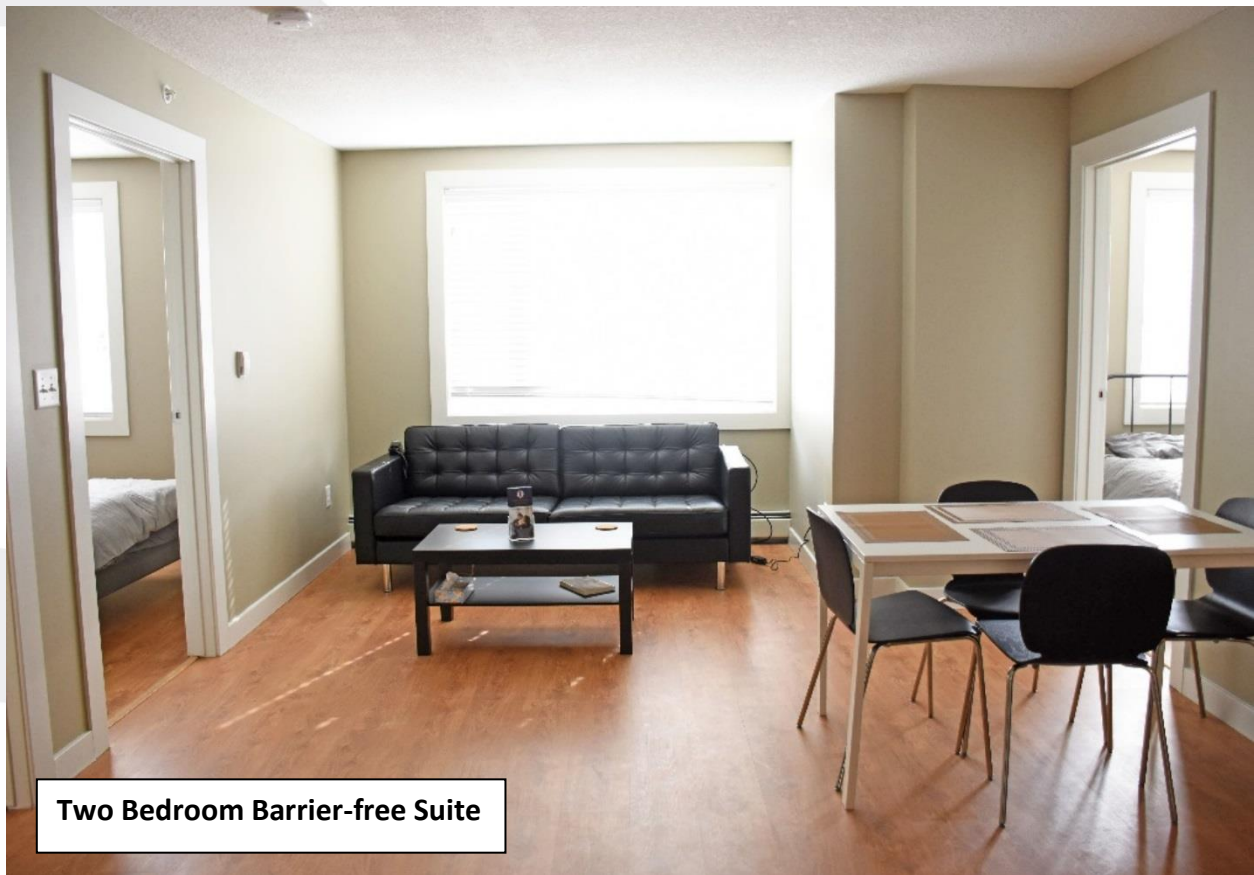
The Ministry of Health, Children, and Youth is committed to developing and providing programs and services that aim to reduce existing barriers to accessing health care services, and aid in improving the overall health outcomes of Métis Albertans.

This program aims to assist low-income citizens who are especially impacted by medically-necessary travel. Many of our citizens are not able to afford a trip to Edmonton and forgo important and necessary medical treatment for that reason. Those who can make the trip often face considerable financial hardship while paying out-of-pocket for travel and accommodations.

Citizens wishing to access this program and book accommodations must meet the defined criteria and are required to submit an application. The cost of travel to, from, and within the city of Edmonton is not included in this program at this time. Application packages can be found at <http://albertametis.com/medical-accommodations> or by contacting your regional office. If you have any questions about this program, please call 780-455-2200 Ext. 249 or email us at [health@metis.org](mailto:health@metis.org).



**One Bedroom Suite**



**Two Bedroom Barrier-free Suite**