

**AltaLink transmission line – 1054L and 1206L/1212L (Heartland Transmission Project):
Potential hazard warning – spacer damper failure**

As part of our ongoing commitment to safety, AltaLink will be increasing the frequency of its inspections along the 1054L and 1206/1212L transmission lines, constructed as part of the Heartland Transmission Project. AltaLink is increasing inspections along 1054L and 1206/1212L lines to monitor the condition of a piece of equipment called a spacer damper. The Métis Nation of Alberta (MNA) was consulted on the Heartland Transmission Project development and the MNA's members may be conducting Traditional Land Use activities where the 1054L and 1206/1212L lines will require more frequent inspections. We are asking the MNA to communicate to their members the potential safety issue related to the spacer dampers.

A spacer damper connects two or more wires at intervals between transmission towers to reduce movement in adverse weather conditions by preventing the wires from contacting and damaging each other. Spacer dampers are attached to the wires with clamps and secured by bolts. The picture below is an example of a spacer damper installed on a transmission line.



AltaLink is increasing inspections because installed spacer dampers of this type have failed on AltaLink transmission lines. Clamp bolts on the failed spacer damper did not remain secure and the clamp released from the wire, causing a portion of the spacer damper to fall to the ground. The picture below is an example of a spacer damper in a failed condition.



AltaLink will be inspecting spacer dampers on an ongoing basis and will address any issues as required. Inspection activities on Crown lands may include low-level helicopter flight inspections, ground level inspections and crews accessing the line from service trucks.

There is a possibility that a spacer damper, or parts of a spacer damper, could fall to the ground from the overhead transmission wires. AltaLink asks that the MNA members who have access to the right-of-way to please avoid walking along or under the right-of-way at the following locations where the spacer dampers have been installed on Crown lands for the 1054L and 1206/1212L lines (also see the corresponding Strip Mosaic [SM] maps enclosed):

- SE-28-56-21-W4 (SM5)
- NE-28-56-21-W4 (SM5)
- SE-32-55-22-W4 (SM17)
- NE-29-53-23-W4 (SM9)
- SE-29-53-23-W4 (SM9)

If circumstances are such that you must cross and/or walk along the right-of-way, please avoid crossing under and walking in areas below the spacer dampers.

If the MNA members believe they have found pieces of spacer dampers on the ground, or notice a spacer damper that appears to be in the failed position outlined and shown above, please contact AltaLink at 1-877-380-0303 or landowner.advocate@altalink.ca and AltaLink will conduct further inspection and investigation.

Please do not pick up or move the pieces because seeing them in their original location will allow AltaLink to more easily identify the line section from which the spacer damper fell.

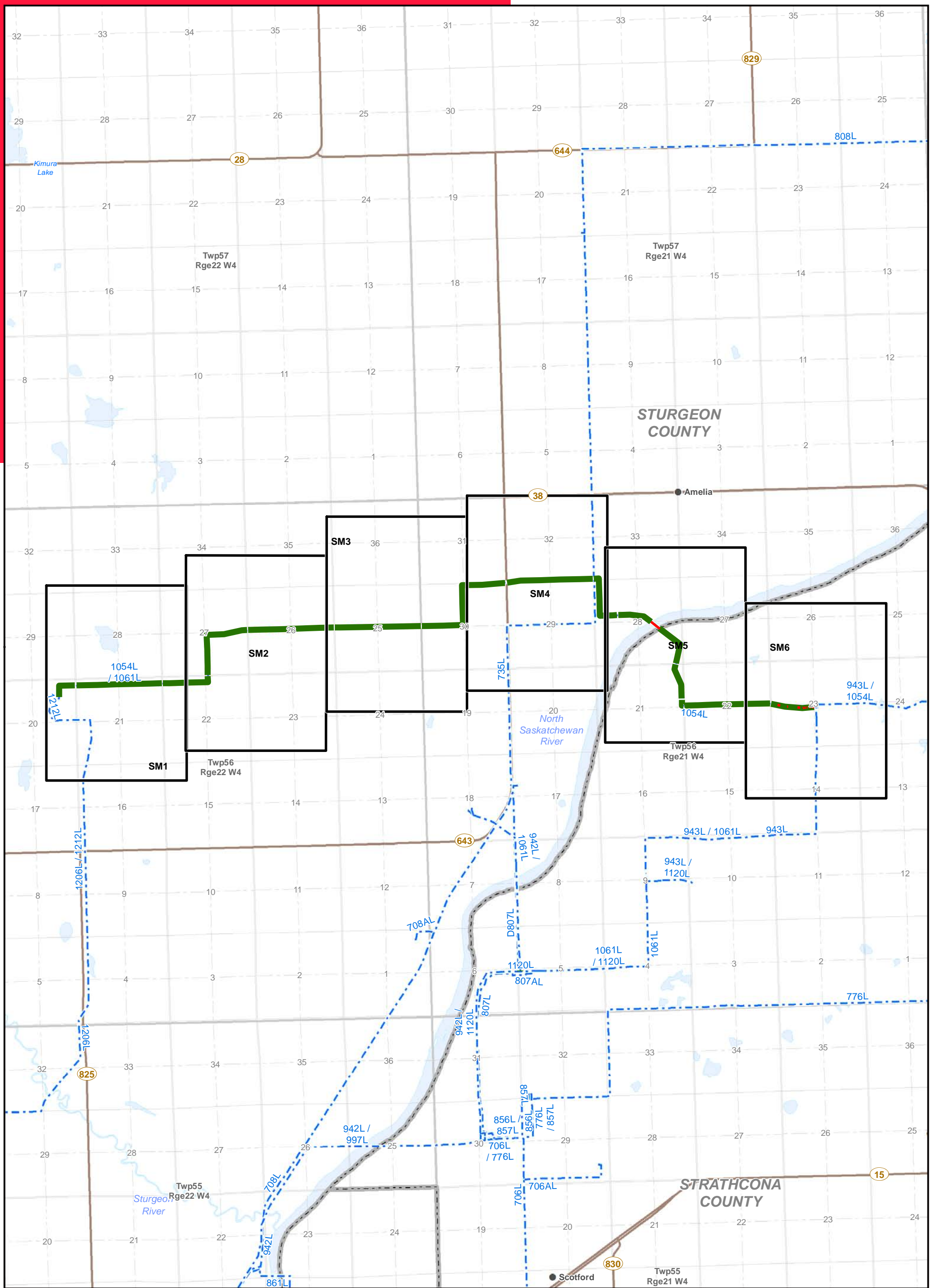
AltaLink apologizes for any inconvenience this may cause and appreciates your help in this communication and letting us know if your members see anything unusual regarding the spacer dampers. Thank you for your cooperation in advance as we work to maintain the safety of the transmission system.

Sincerely,



Kris Gladue
Manager, Aboriginal Relations
AltaLink

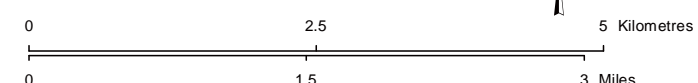
O: 780-948-4035 | C: 780-717-1639



LEGEND

- Affected Line Segments: GIS
- Affected Line Segments: Land
- Hamlet or Locality
- - - Existing Transmission Line
- ▭ Mapsheet
- Road
- ▭ Municipal or County Boundary
- Water Body

NO:
 DRAWN: MR - AL
 FILE NO.: XXXXXXX
 REVISION: 0.00.00
 AL FOLDER: 1064_1065_160429
DATE: 2016-05-09



STRIP MOSAIC S11



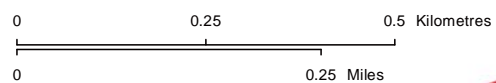
1054L/1061L Affected Line Segments



LEGEND

- Existing Structure
- Affected Line Segments: GIS
- Affected Line Segments: Land
- Existing Transmission Line
- Wellsite
- Pipeline
- Road
- Municipal or County Boundary

NO: DRAWN: MR - AL
 FILE NO: XXXXXXX
 REVISION: 0.00.00
 AL FOLDER: 1064_1065_160429
DATE: 2016-05-06



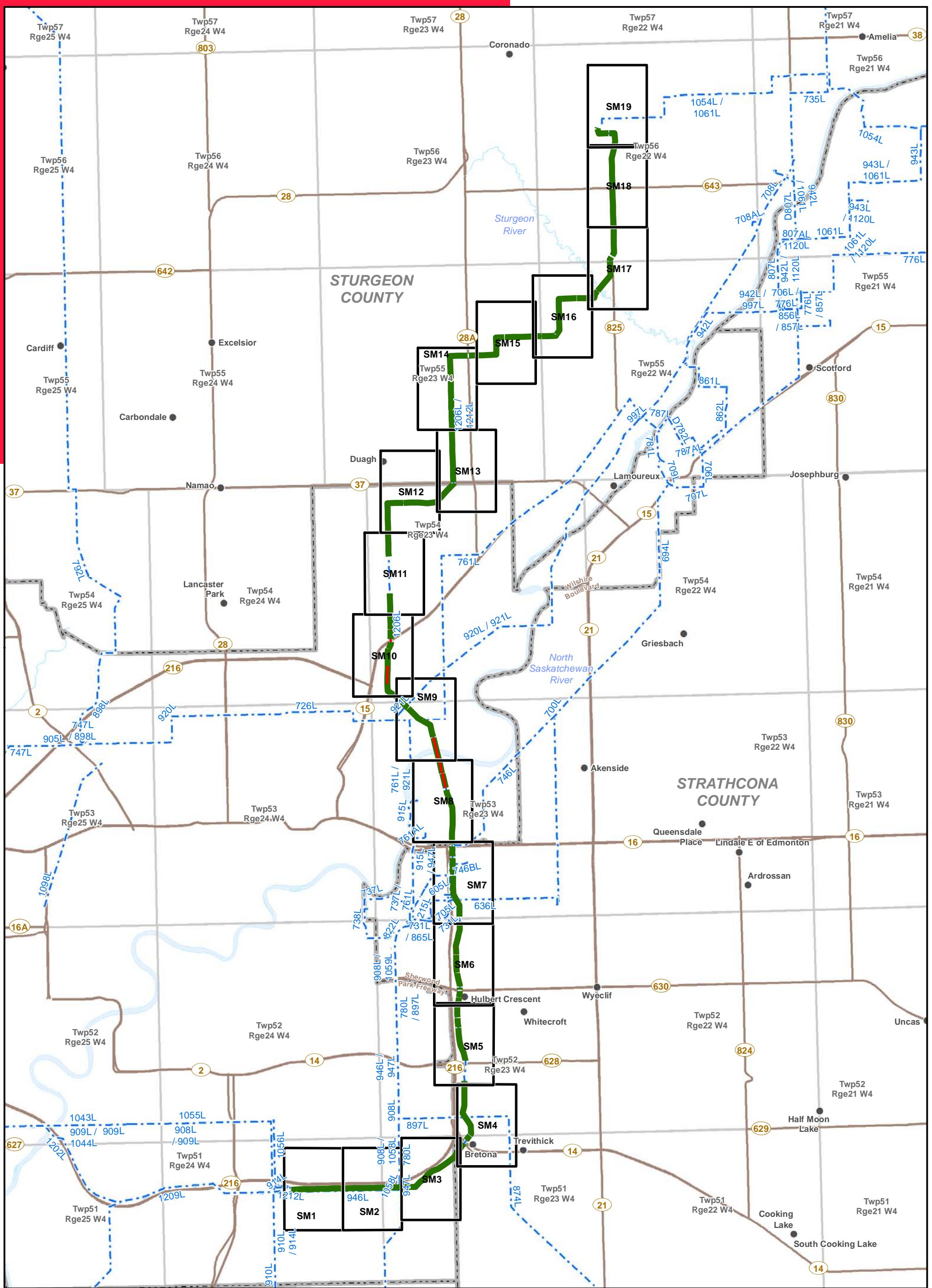
STRIP MOSAIC SM5



1054L/1061L Affected Line Segments

— Affected Line Segments: Land

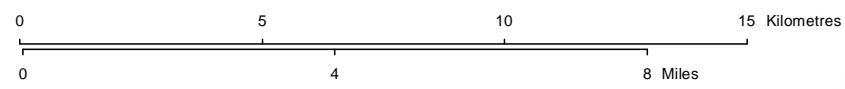
Service Layer Credits: © Harris Corp, Earthstar Geographics LLC Earthstar Geographics SIO © 2016 Microsoft Corporation
 Although there is no reason to believe that there are any errors associated with the data used to generate this product or in the product itself, users of these data are advised that errors in the data may be present.



LEGEND

- Affected Line Segments: GIS
- Affected Line Segments: Land
- Hamlet or Locality
- - - Existing Transmission Line
- Mapsheet
- Road
- ▭ Municipal or County Boundary
- ▭ Water Body

NO:
 DRAWN: MR - AL
 FILE NO.: XXXXXXX
 REVISION: 0.00.00
 AL FOLDER: 1064_1065_160429
DATE: 2016-05-09



Although there is no reason to believe that there are any errors associated with the data used to generate this product or in the product itself, users of these data are advised that errors in the data may be present.

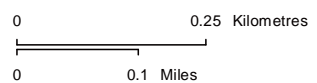
STRIP INDEX SI1



LEGEND

- Existing Structure
- Affected Line Segments: GIS
- Affected Line Segments: Land
- - - Existing Transmission Line
- Wellsite
- Pipeline
- Road
- Municipal or County Boundary

NO: DRAWN: MR - AL
 FILE NO: XXXXXX
 REVISION: 0.00.00
 AL FOLDER: 1064_1065_160429
DATE: 2016-05-06

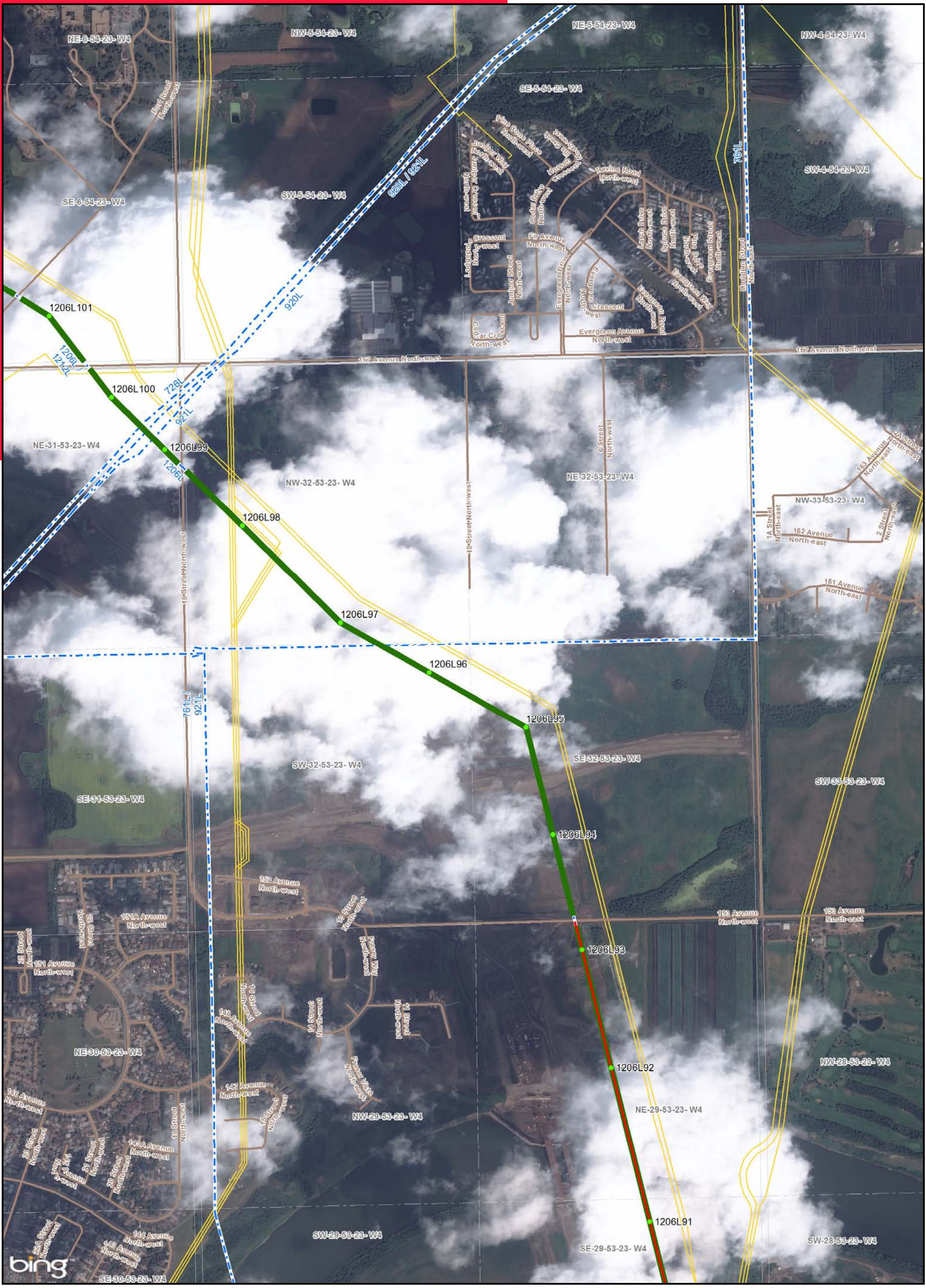


Service Layer Credits: © Harris Corp, Earthstar Geographics LLC Earthstar Geographics SIO © 2016 Microsoft Corporation
 Although there is no reason to believe that there are any errors associated with the data used to generate this product or in the product itself, users of these data are advised that errors in the data may be present.

STRIP MOSAIC SM17



1206L/1212L Affected Line Segments



LEGEND

- Existing Structure
- Affected Line Segments: GIS
- Affected Line Segments: Land
- Existing Transmission Line
- Wellsite
- Pipeline
- Road
- Municipal or County Boundary

NO: DRAWN: MR - AL
 FILE NO: XXXXXX
 REVISION: 0.00.00
 AL FOLDER: 1064_1065_160429
DATE: 2016-05-06

0 0.25 Kilometres
 0 0.1 Miles

Service Layer Credits: © Harris Corp, Earthstar Geographics LLC Earthstar Geographics SIO © 2016 Microsoft Corporation
 Although there is no reason to believe that there are any errors associated with the data used to generate this product or in the product itself, users of these data are advised that errors in the data may be present.

STRIP MOSAIC SM9

ALTALINK
 A BERKSHIRE HATHAWAY ENERGY COMPANY

1206L/1212L Affected Line Segments